

DONOR



ITALIAN GOVERNMENT THROUGH THE
ITALIAN AGENCY FOR COOPERATION
AND DEVELOPMENT (AICS)

GOVERNMENT COORDINATING
AGENCY



MINISTRY OF PRODUCTION
AND ECONOMIC RESOURCES -
KASSALA STATE

EXECUTING AGENCY



UNITED NATIONS INDUSTRIAL
DEVELOPMENT ORGANIZATION

KASSALA STATE, EASTERN SUDAN

FOSTERING INCLUSIVE ECONOMIC GROWTH IN KASSALA STATE THROUGH AGRO-VALUE CHAINS DEVELOPMENT AND ACCESS TO FINANCIAL SERVICES

(2018–2021)

BUDGET – 2,318,269 EUR

GOAL

To create sustainable job opportunities and foster inclusive economic growth in Kassala State through agro-value chains development and access to finance.



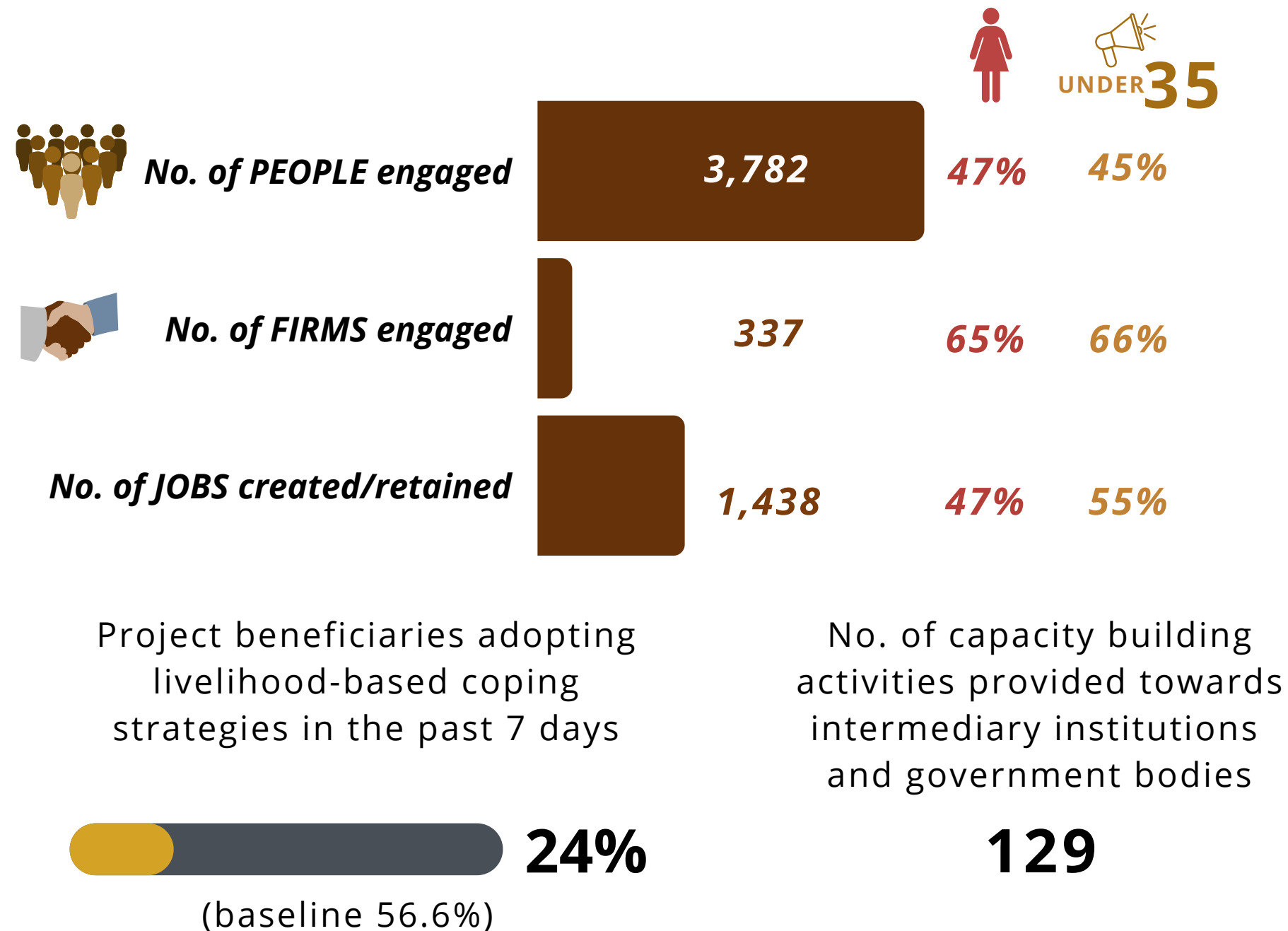


OVERALL IMPACT

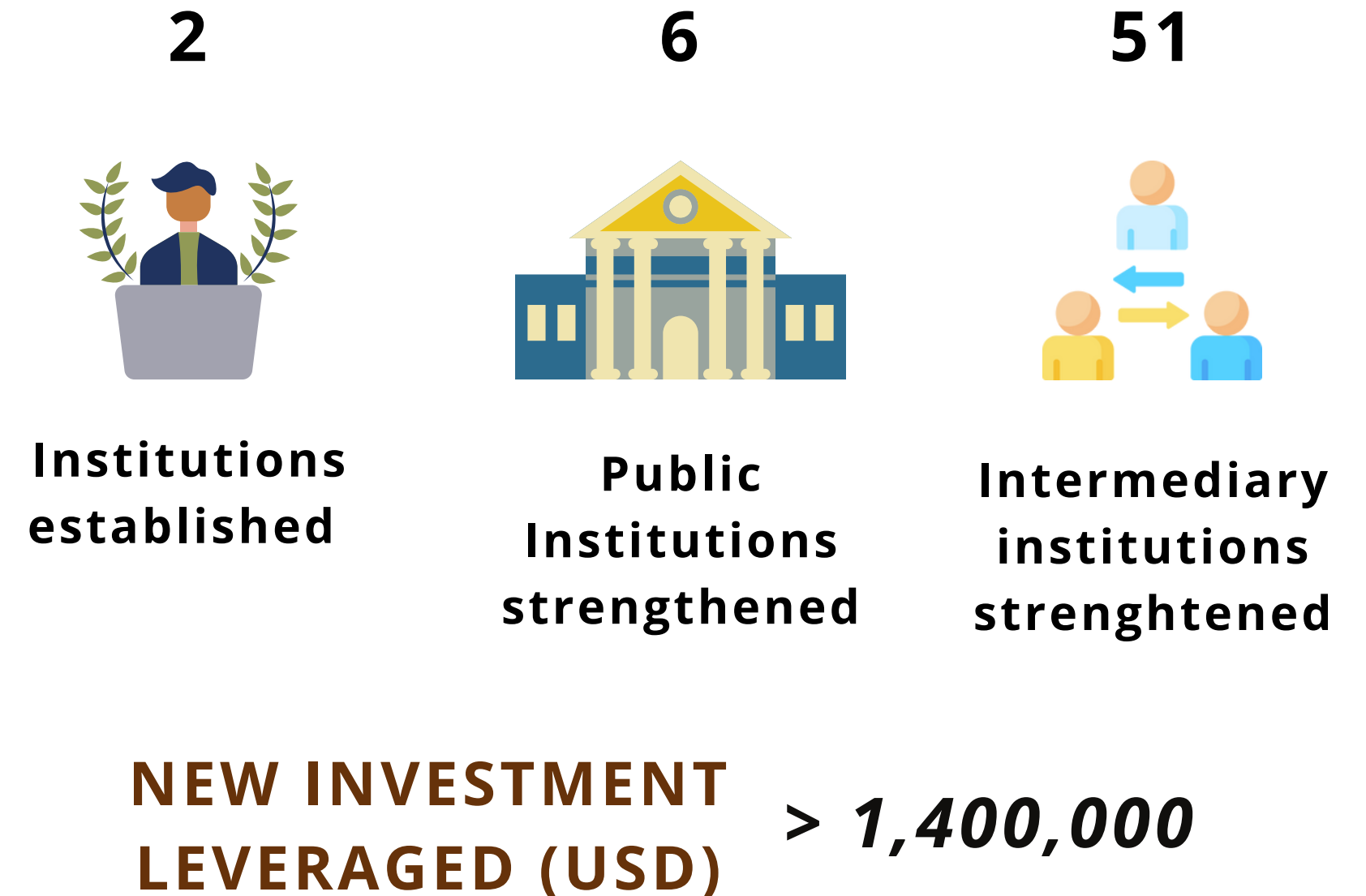




AGGREGATED OUTPUTS AT THE MICRO LEVEL



AGGREGATED OUTPUTS AT THE MESO LEVEL



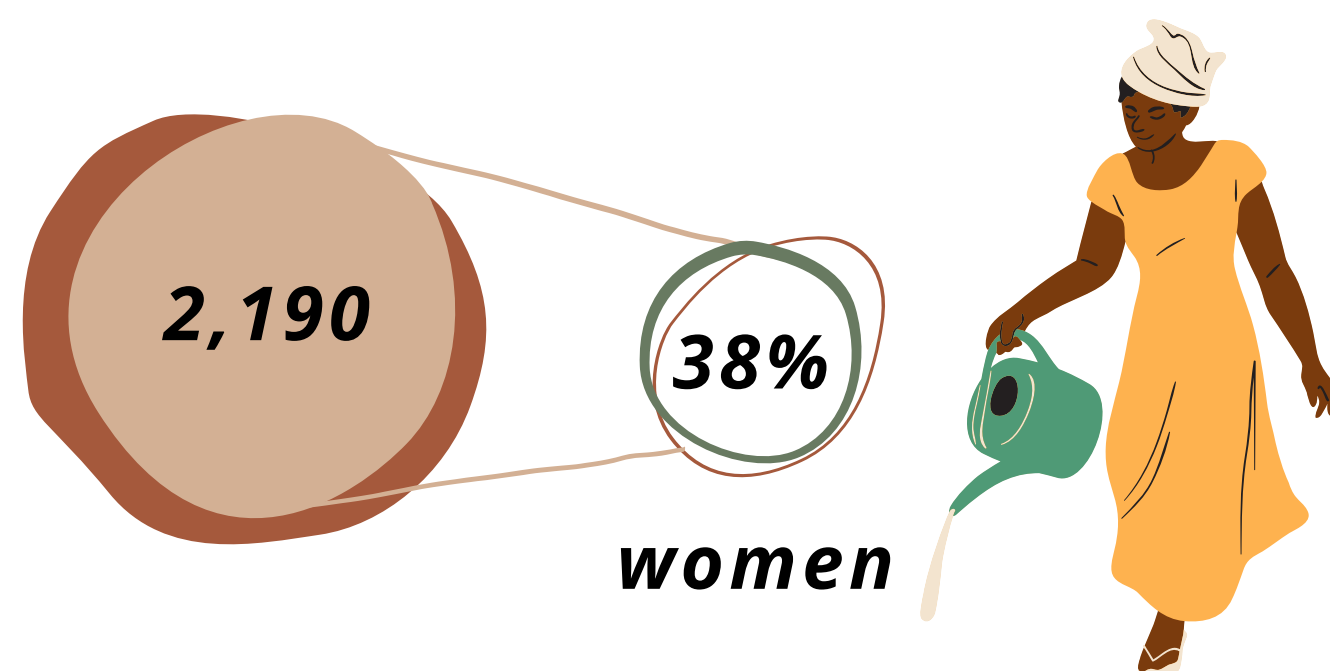


PRODUCTION KPIs



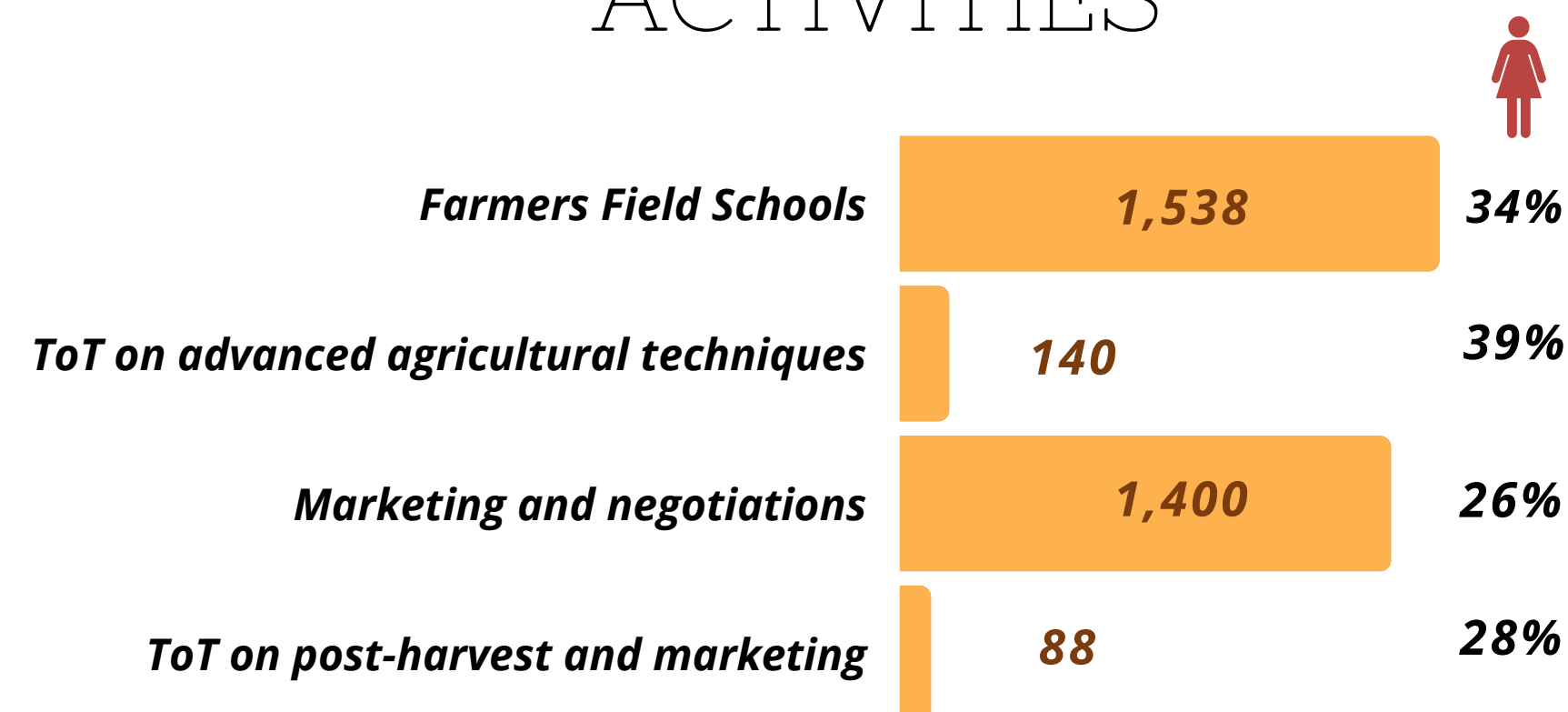
FARMERS AND SUPPORT INSTITUTIONS TRAINED IN THE PRODUCTION SIDE

TOTAL BENEFICIARIES TRAINED



FARMERS AND STAFF FROM PUBLIC SUPPORT INSTITUTIONS TRAINED IN THE PRODUCTION SIDE

BREAKDOWN OF TRAINING ACTIVITIES





UNIDO TECHNICAL PACKAGE HECTARES CULTIVATED



BENEFITS TO UNIDO-SUPPORTED FARMERS (COMPARED TO BASELINE)

**Average harvest
yield increase**



**Farmers reporting
harvest yield
increased**



**Average profit
increase per
producers' association**

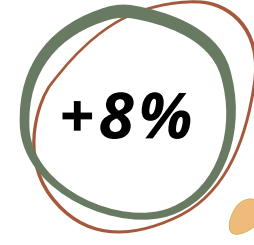
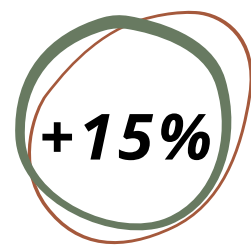
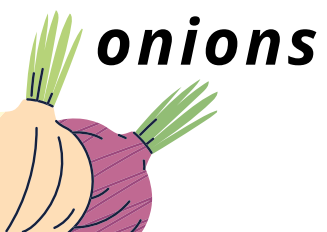
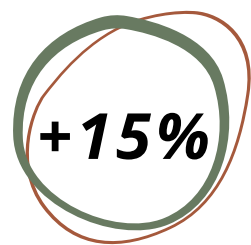


**Increase of households
selling part of
their production**



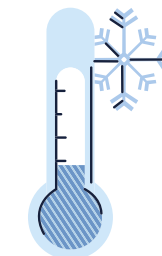
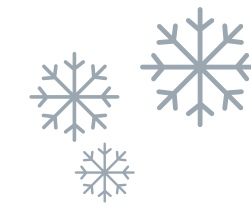
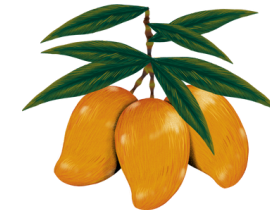
HARVEST YIELD INCREASE UNDER UNIDO TECHNICAL PACKAGE BREAKDOWN PER CROP (COMPARED TO BASELINE)

**Average harvest
yield increase (overall)**



POST-HARVEST SUPPORT COLD STORAGE FACILITY

Crops stored



Volume
800 m3
(3 rooms)

Governance & Ownership

PPP:



Farmers' Cooperative
(+500 farmers)



Ministry of
Agriculture



PROCESSING KPIs





PERMANENT INSTITUTIONS STARTED UP BY UNIDO IN SUPPORT OF AGRI-ENTREPRENEURS

ENTREPRENEURSHIP DEVELOPMENT COMMITTEE OF THE KASSALA STATE (EDC)

 **Multi-
stakeholders'
committee**



 **PPP**
(Financial institutions,
guarantee agencies,
ministries and academic
institutions)

 **Goal:**



Supporting local entrepreneurship and fostering
financial inclusion for micro, small and medium
business promoters

ENTREPRENEURIAL HUB HOSTED BY THE UNIVERSITY OF KASSALA

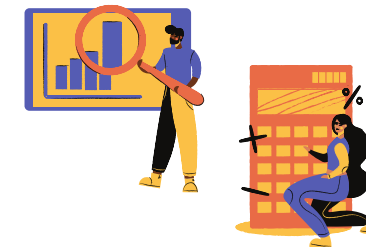
Hosted by UoK



**Started up and
trained by UNIDO**



 **The Hub provides:**

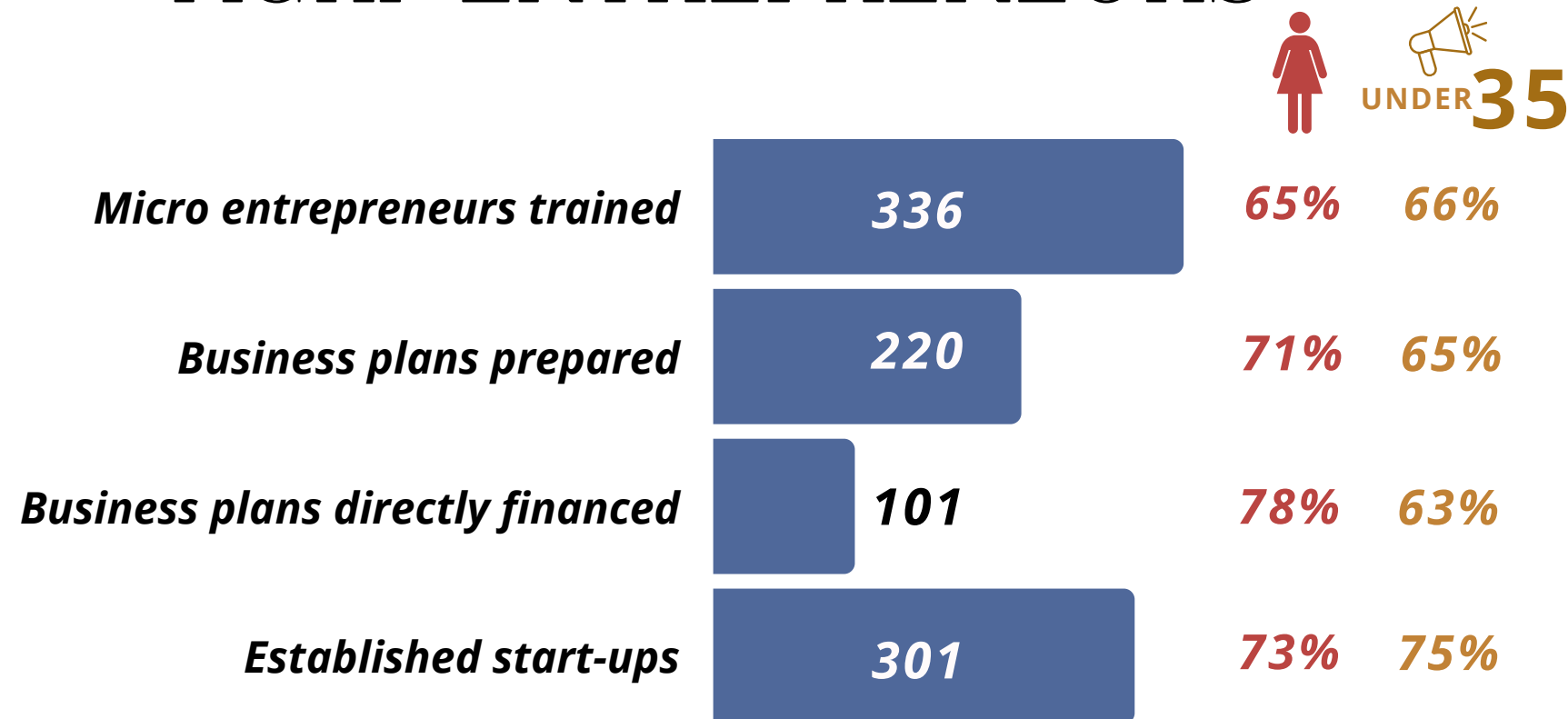


Entrepreneurial
training

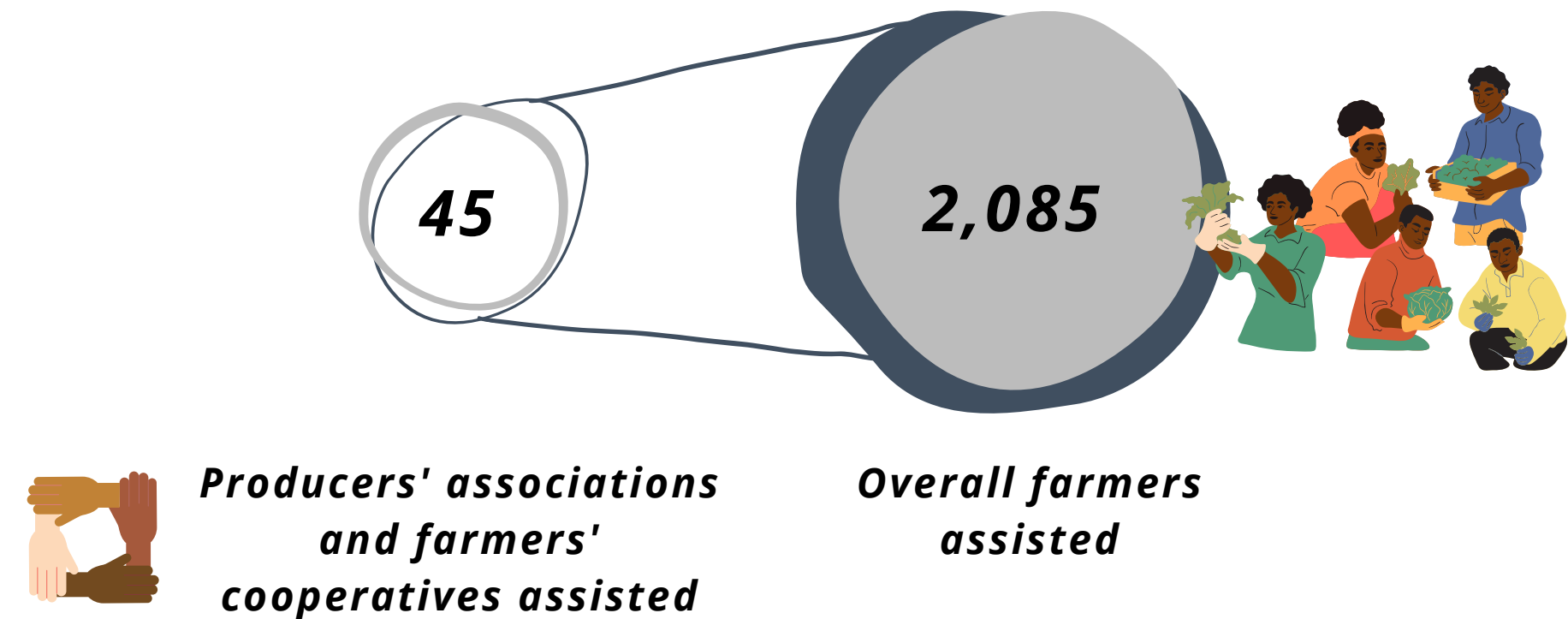


Entrepreneurial
coaching services

TECHNICAL SUPPORT TO AGRI-ENTREPRENEURS



SUPPORT TO FARMERS ON SMALL TO MEDIUM-SCALE INVESTMENTS PLANS



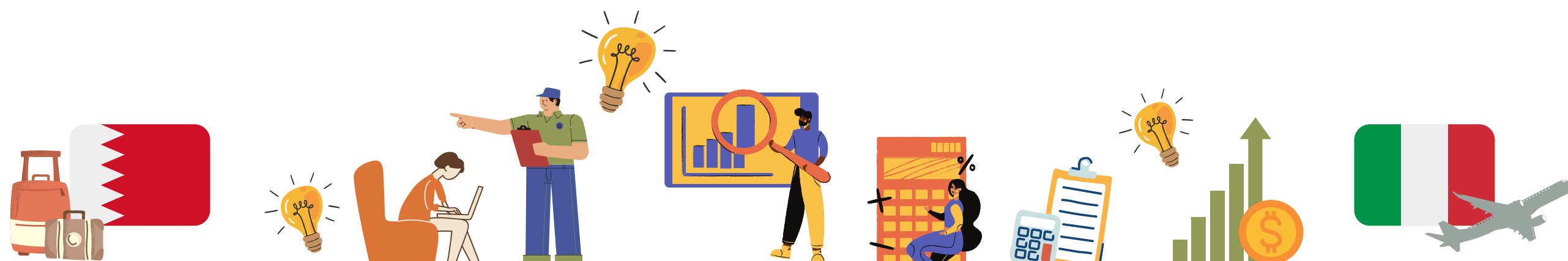
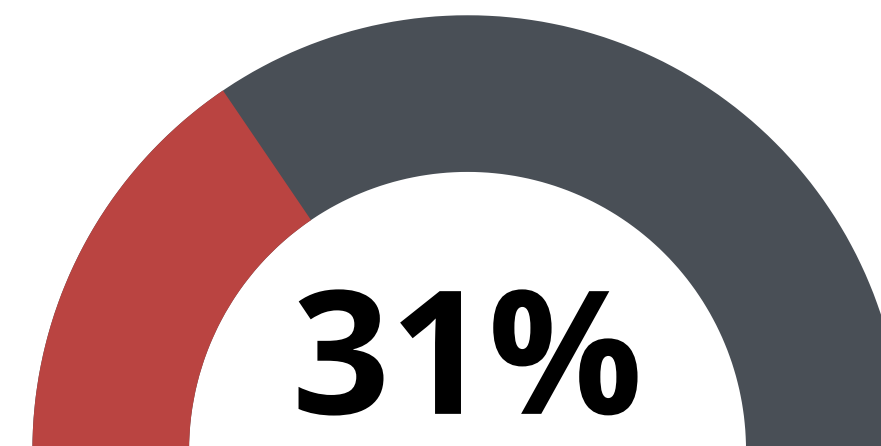
5 Small to medium-
scale investment
plans developed





TOT ON ENTREPRENEURSHIP

(INCLUDING 2 STUDY TOURS IN ITALY AND BAHRAIN)





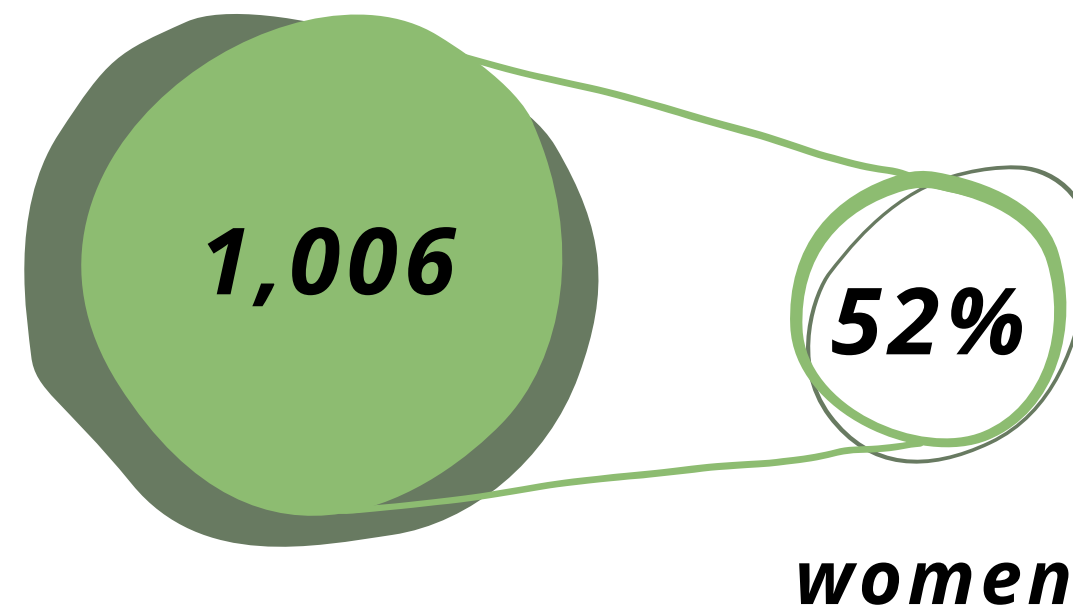
FINANCIAL INCLUSION KPIs





FINANCIAL EDUCATION ACTIVITIES AND OUTCOMES

PEOPLE TRAINED ON FINANCIAL EDUCATION, BOOKEEPING AND FINANCIAL LITERACY



Project beneficiaries spending
more than 65% of their total
expenditure on food

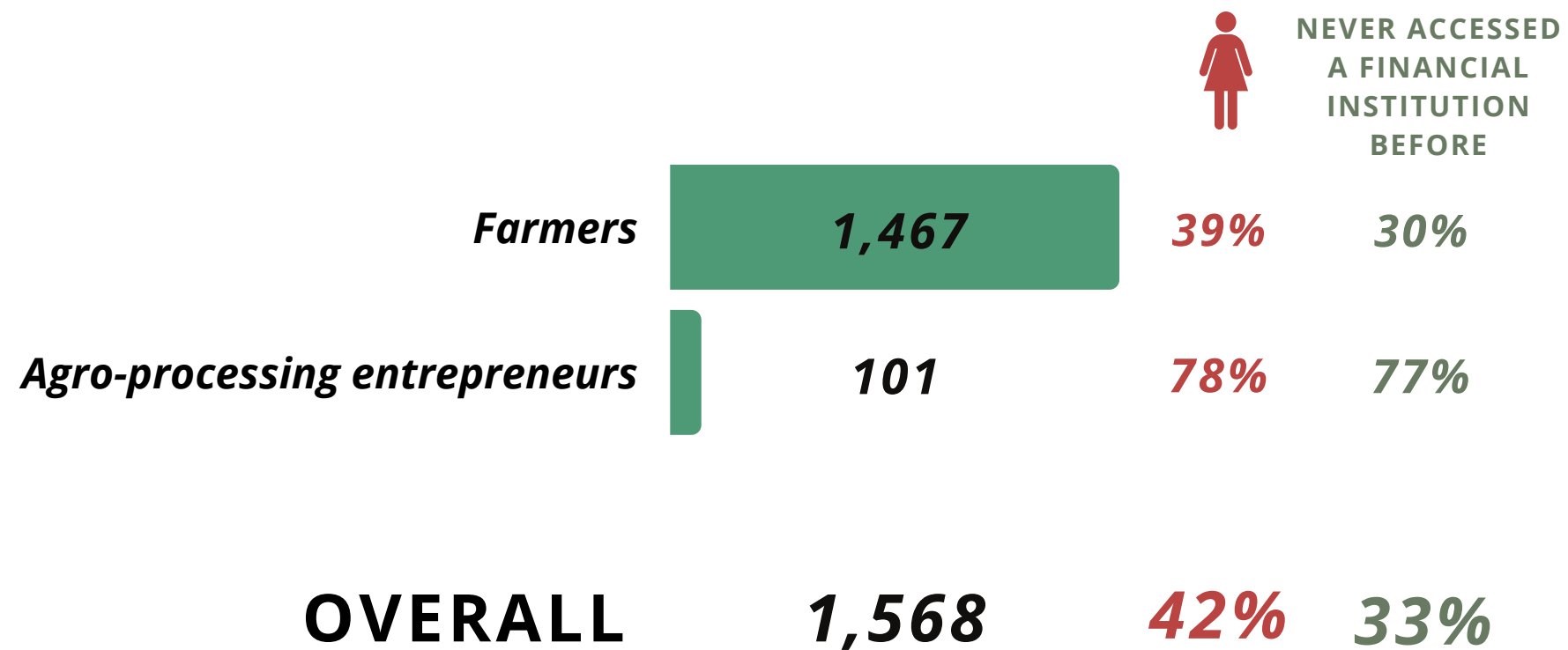


UNIDO's beneficiaries
reporting increase in
the household income

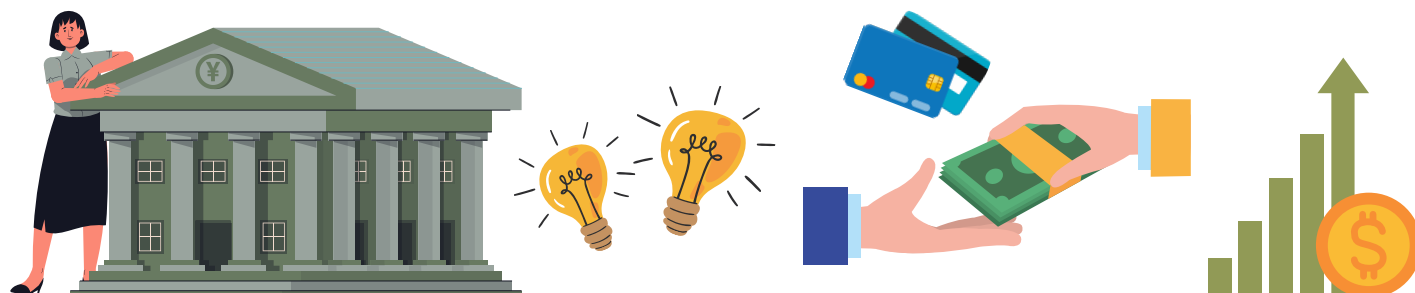
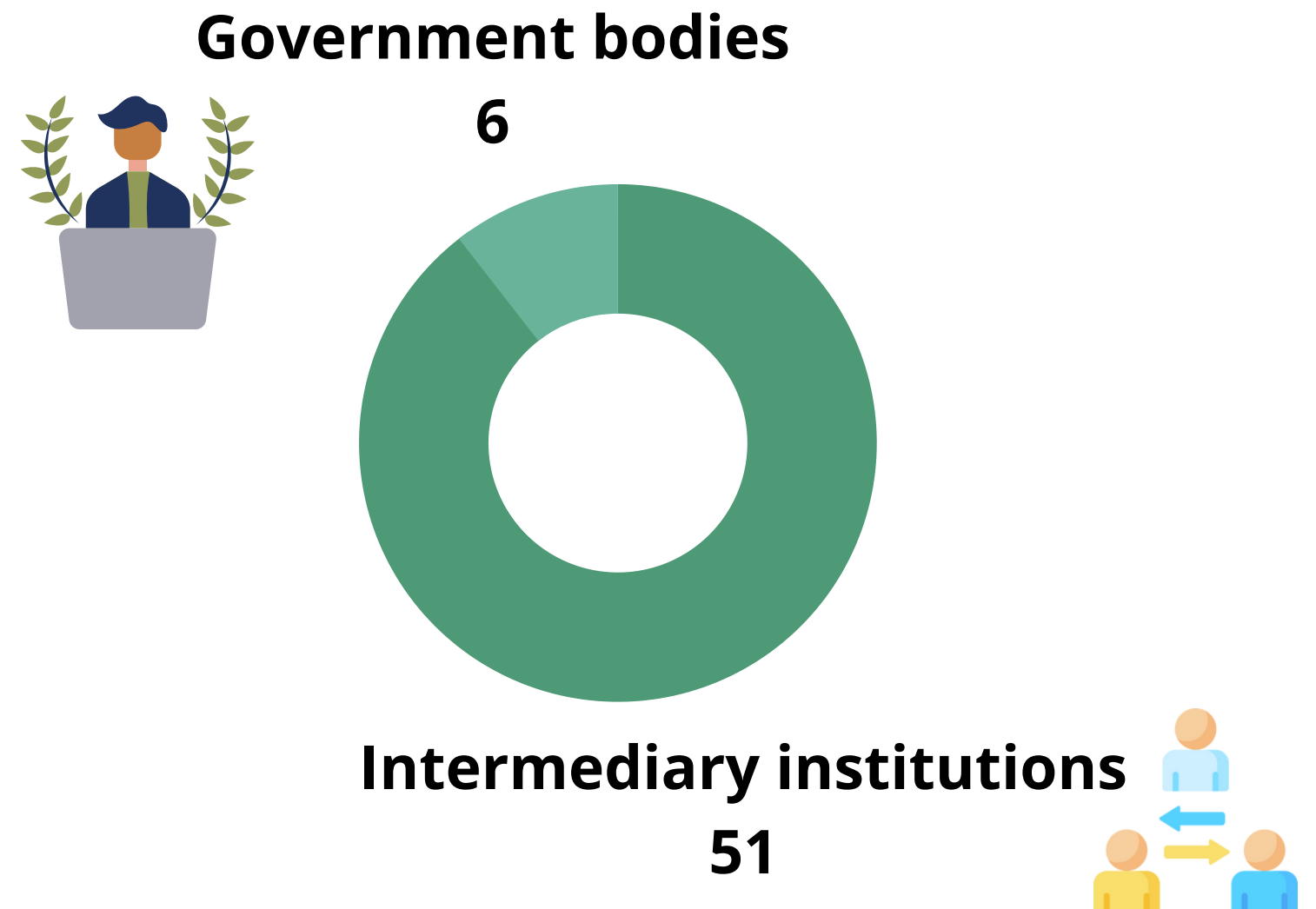




BENEFICIARIES RECEIVING MICRO-LOANS UNDER THE PROJECT INTERVENTION



INSTITUTIONS STRENGTHENED ON USE AND DESIGN OF INNOVATIVE FINANCIAL INSTRUMENTS

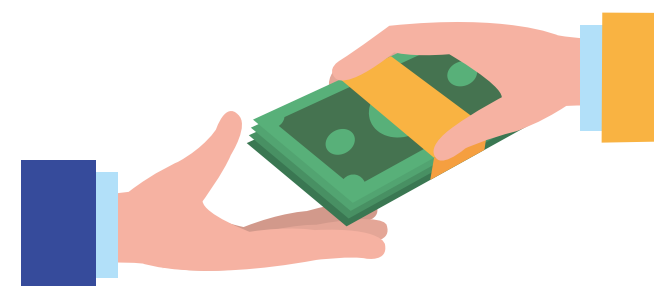




**PROJECT LOAN PORTFOLIO
(PRODUCTION+PROCESSING)**
NO. OF MICROLOANS
DISBURSED

**OVERALL LOAN
PORTFOLIO DISBURSED
(EUR)**

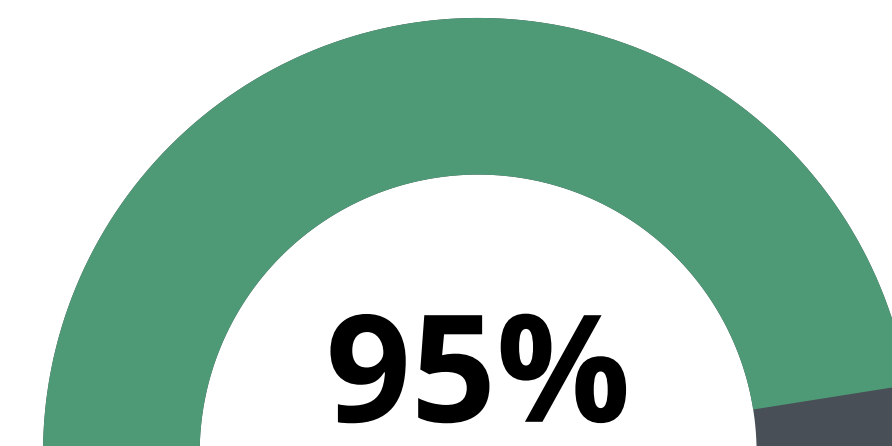
513,601



1,569



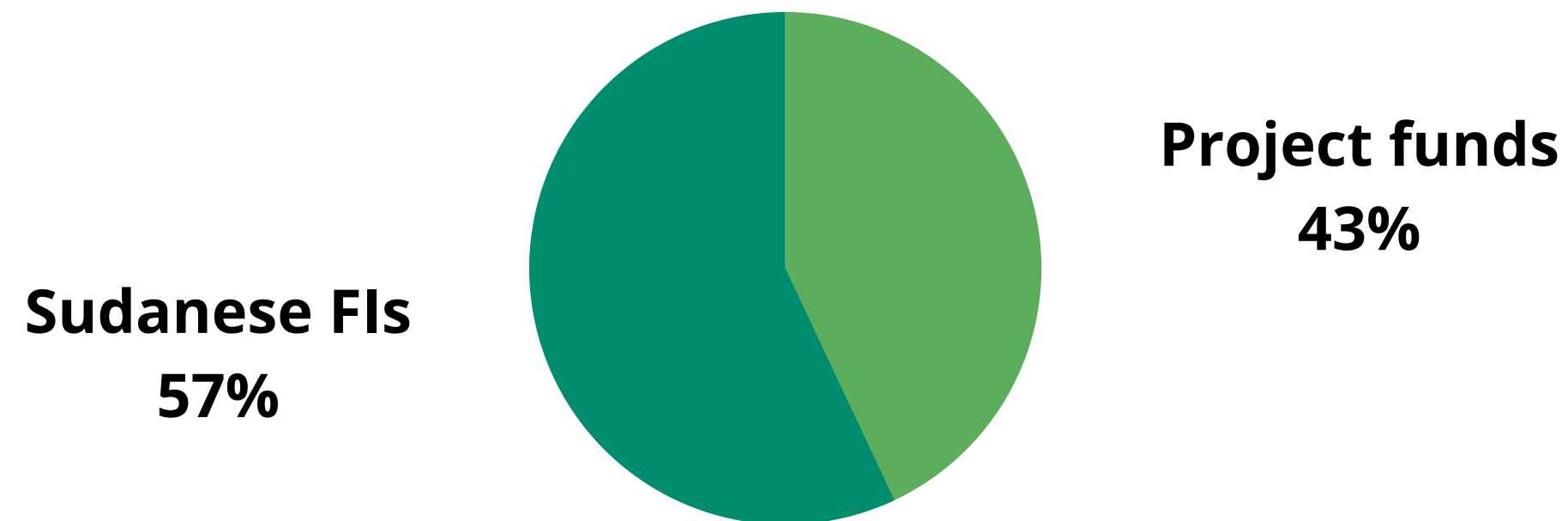
REPAYMENT RATE





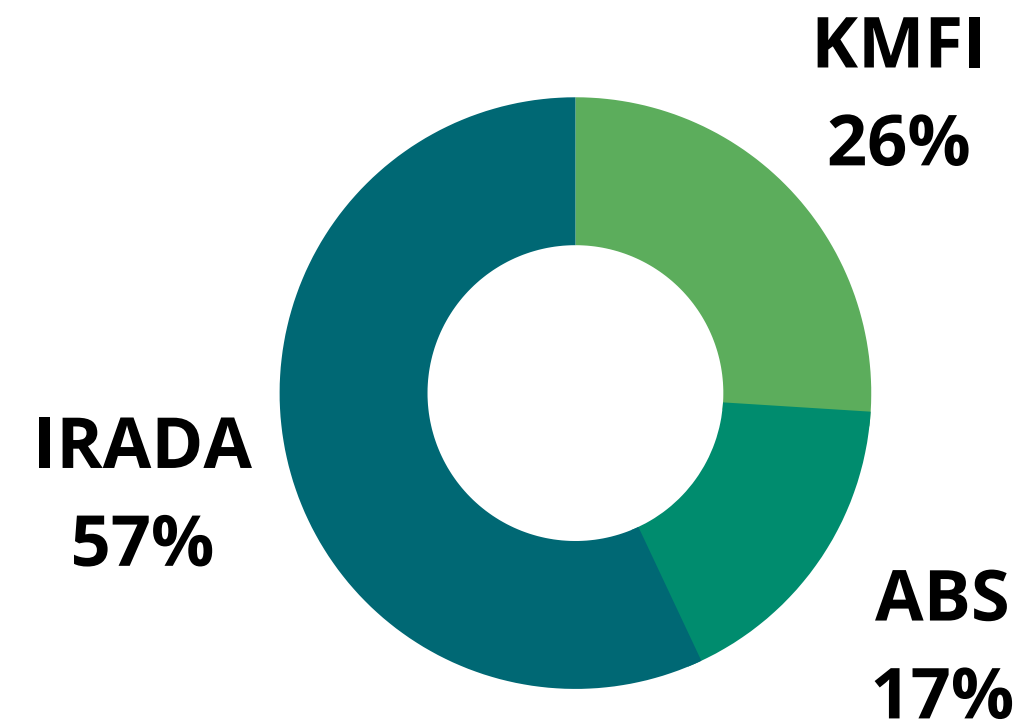
FINANCIAL LEVERAGE

(CO-FINANCING FROM SUDANESE FINANCIAL INSTITUTIONS ON OVERALL LOAN PORTFOLIO)



SUDANESE FINANCIAL INSTITUTIONS PARTNERING

(% ON OVERALL LOAN PORTFOLIO SHARE)



KMFI: Kassala Microfinance Institution
ABS: Agricultural Bank of Sudan