

"Humanitarian Development

Nexus: Strengthening a decentralized Health System for
Protracted displaced population (HealthPro) in al
Fasher and Nyala (North and South Darfur States")

T05-EUTF-HOA-SD-73-01

Continuous Professional Development (CPD)
(EU funded project)

TECHNICAL REPORT

Contracting Authority:
Italian Agency for Development Cooperation
Khartoum Field Office
Street 33, Amarat, Khartoum
SUDAN



SUMMARY

Premise	3
Intervention Overview.....	3
Purpose of the document.....	3
Continuous Professional Development (CPD) rehabilitation.....	3
State of Art.....	3
Planned interventions	5
Details of interventions.....	5



PREMISE

Intervention Overview

This intervention is part of the program "Humanitarian Development Nexus: Strengthening a decentralized Health System for protracted displaced population (HealthPro) in al Fasher and Nyala (North and South Darfur States"- ABAC Reference T05-EUTF-HOA-SDN-73-01.

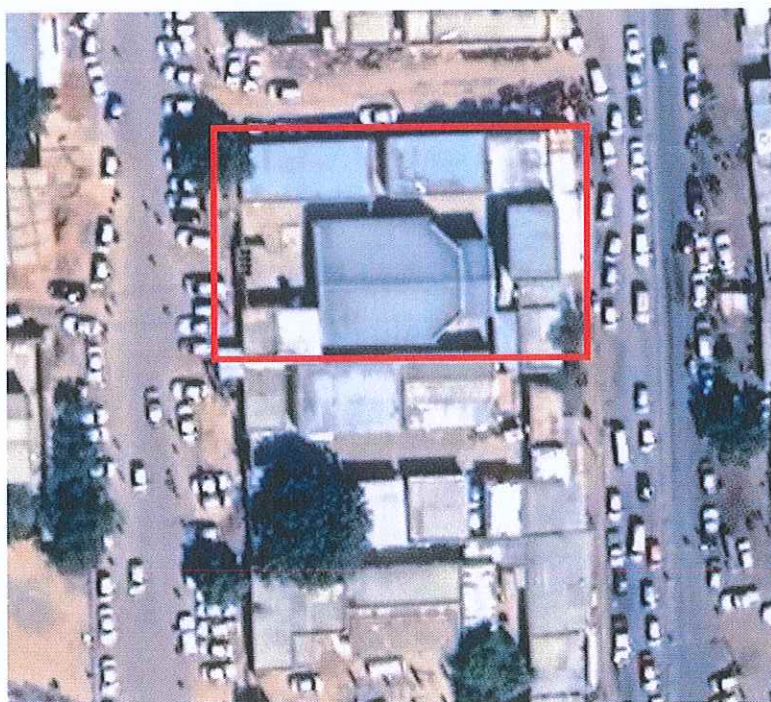
Purpose of the document

The purpose of this document is to describe the intervention for the rehabilitation of the Continuous Professional Development (CPD), in order to explain and give all the technical information's that are reported on the drawings and quantified on the Bill of Quantities.

Continuous Professional Development (CPD)

State of art

The Continuous Professional Development (CPD) - State of North Darfur (Al Fasher) contains of scattered one-story and two-story buildings. The Site is located in Al Fasher (Northern Al Fasher) / State of North Darfur (13°37'41.39"N, 25°21'21.34"E)

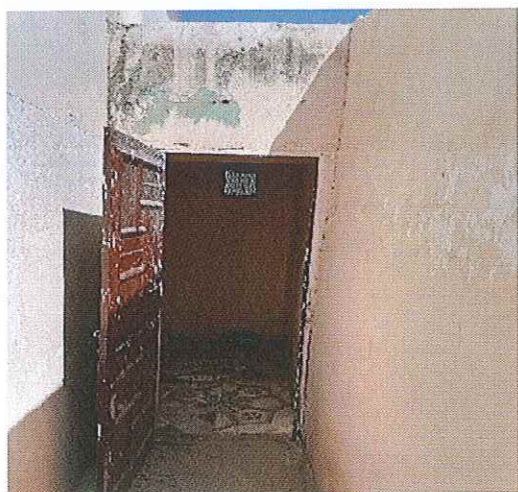
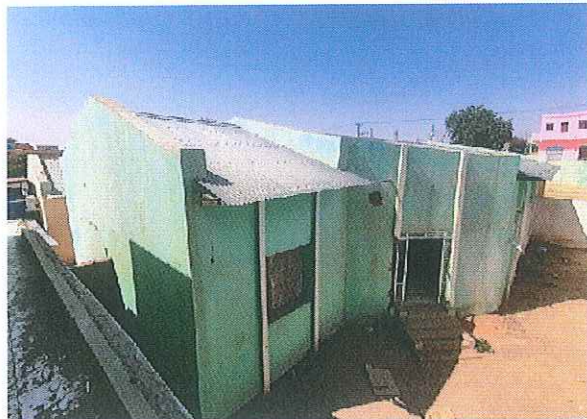


Geographical coordinates: 13°37'41.39"N, 25°21'21.34"E



The subject of this report is the rehabilitation of the existing main buildings and new design of the Continuous Professional Development.

For a more detailed description of the Health Center, see the Assessment Report prepared by Double Q.T. C Engineering.



General Photo of The Continuous Professional Development



Planned interventions

In order to finalize the rehabilitation of the CPD, the Ministry of Health of the State of NORTH DARFUR has requested the rehabilitation of this area.

The general conditions of the buildings are poor that's why a rehabilitation works and new constructions is necessary.

To summarize, the planned interventions are:

- Erections of new access ramps and masonry mastaba around buildings
- Erection of new Toilet's
- Erection of a new steel stairs
- Rehabilitation works for all the blocks
- Rehabilitation works for plumbing system and electrical system

Details of interventions

All the interventions are:

1. Erections of new access ramps and masonry mastaba

The project includes the erection of sloped access ramp, with plain concrete surface properly finished that will allow access to people with disabilities to the buildings (+30 cm above the ground level).

2. Erection of new Toilet's

The project includes the erection of new toilet and new disability toilet with sloped access ramp. A new roof will be added to the existing toilets and a new exterior wash basin also.

3. Erection of a new steel stairs

The existed stair in Block B is not safe due to the extreme slope and missing of railings. A new steel stair will be constructed in Block B (*refer to drawings CPD 14*).

4. Rehabilitation works for all the blocks

The project includes all the rehabilitation work including new flooring, plastering, painting, new doors and windows and corrugated metal sheet for roofing.

5. Plumbing and electrical connections

Plumbing system is not present, new gully traps and manholes shall be connected to the septic tank.

The electric system including the wires, accessories and fixtures will be provided to the project.

