



NOTES:
All Dimensions are in Meters unless otherwise stated.
All measurements to be verified on site.
All levels to be verified on site.



WALLS:



▲ S-xx Section identification

FIXED FURNITURE:

A Department Nurse Station
MDF 20mm with HPL

- A1** 3.40 x 0.70 x 1.10 m
- A2** 1.20 x 0.70 x 1.10 m
- A3** (1.10 x 0.70 x 1.10 m) + (2.50 x 0.70 x 1.10 m)
- A3'** (2.50 x 0.70 x 1.10 m) + (1.10 x 0.70 x 1.10 m)
- A4** (2.10 x 0.70 x 1.10 m)
- A5** (2.55 x 0.70 x 1.10 m)

B Staff workbench
MDF 20mm with HPL

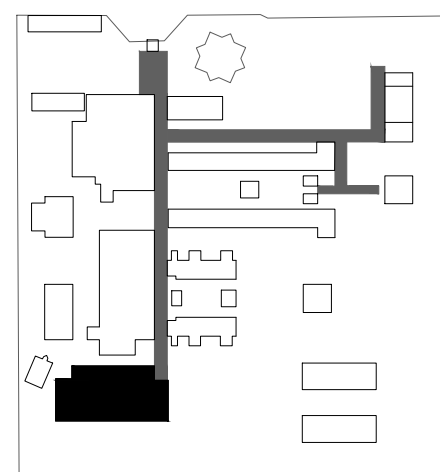
- B1** 1.65 x 0.60 x 0.90 m
- B1'** 1.65 x 0.35 x 0.6 m
- B2** 2.15 x 0.60 x 0.90 m
- B2'** 2.15 x 0.35 x 0.6 m
- B3** 1.90 x 0.60 x 0.90 m
- B3'** 1.90 x 0.35 x 0.6 m
- B4** 2.55 x 0.60 x 0.90 m
- B4'** 2.55 x 0.35 x 0.6 m
- B5** 1.80 x 0.60 x 0.90 m
- B6** 2.55 x 0.35 x 0.6 mm

C Staff workbench (soiled utility)
MDF 20mm with HPL

- C1** 1.65 x 0.60 x 0.75 m
- C2** 1.70 x 0.60 x 0.75 m
- C3** 2.20 x 0.60 x 0.75 m
- C4** 2.40 x 0.60 x 0.75 m
- C5** 2.10 x 0.60 x 0.75 m
- C6** 1.90 x 0.60 x 0.75 m

D Staff countertop
MDF 20mm with HPL

- D1** 4.95 x 0.70 x 0.75 m
- D2** 1.70 x 0.70 x 0.75 m



Logo: border: 1px solid black; padding: 2px; display: inline-block; font-size: 0.8em; font-weight: bold;">308387C5.jpg

UNOPS

Rehabilitation of the Saudi Maternity Hospital
Kassala Health Citadel, Sudan

Architecture

Detailed design

Block J
Furniture plan

6 March 2020
A1 | 1:100

ARC.02.J.05